

# SIGN LANGUAGE INTERPRETER PREPARATORY PROGRAM

 Frederick Community College



**Program Contact**

**Leslie Puzio • 301.624.2783 • [lpuzio@frederick.edu](mailto:lpuzio@frederick.edu)**

# Sign Language Interpreter Preparatory Program

*The Sign Language Interpreter Preparatory Program (IPP) offers degree and certificate programs designed to provide students with a strong foundation of knowledge, skills, and practical experience to become successful working interpreters. Courses teach theoretical, ethical, cultural, and practical knowledge of the interpreting field, as well as cognitive processing skills to effectively interpret to prepare students for entry-level sign language interpreter positions or to transfer to a four-year institution.*

## The Program

As one of only two programs in the state, this program prepares individuals to work as an entry-level sign language interpreter who facilitates and mediates communication between Deaf/hard of hearing and hearing people. Interpreters must convey accurate messages, tone, and intent of participants, whether those messages are spoken or signed. Above average competency in English and strong American Sign Language skills are necessary. A strong academic background and traits that demonstrate maturity, responsibility, flexibility, and the ability to work well under pressure are assets.

Students experience a variety of learning environments, including classroom work, computer lab practice/assessment and field placement. Students will be required to have both in-class and out-of-class experiences with members of the Deaf Community to further develop ASL fluency and cultural awareness. Frederick County is the largest Deaf community in the state and its proximity to metro areas creates a high demand for interpreters.

At the completion of this program, students will be able to:

- Apply theoretical, ethical, cultural, and practical knowledge of the interpreting field needed to pass the RID certification knowledge written test.
- Understand major linguistic features of ASL and English, and the major cultural features of Deaf and non-Deaf communities.

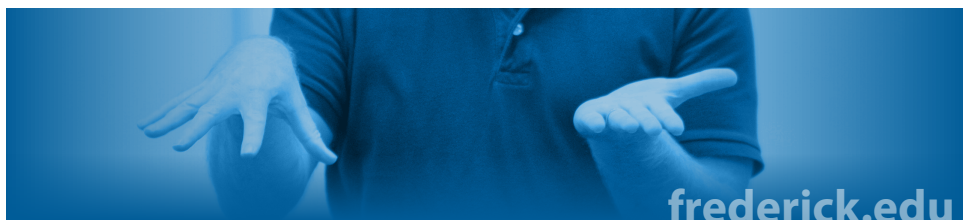
- Possess cognitive processing skills to effectively interpret between English and American Sign Language and to transliterate between spoken English and a signed form of English.
- Comprehend different modes of interpreting/transliterating (i.e. consecutive and simultaneous) and to choose the appropriate mode in a given setting/situation.
- Provide an accurate and appropriate transfer of a message from a source language into a target language from the point of view of style, culture, and the linguistic needs of the consumers.
- Possess techniques and understand logistics in order to manage the setting.

## Estimated Salaries & Growth Potential

The mean annual wage for interpreters and translators in Maryland was \$62,910 in May 2015. Wages are higher in the District of Columbia, with a mean annual wage of \$83,280. Employment of interpreters and translators nationally is projected to grow 29 percent from 2014 to 2024, much faster than the average for all occupations. Demand for American Sign Language interpreters is expected to grow rapidly, driven by the increasing use of video relay services.<sup>1</sup>

An estimated 3,000 Deaf people and more than 6,000 American Sign Language users live, work and attend school in Frederick County. These Deaf communities offer ASL students many opportunities to work within the ASL culture.

<sup>1</sup> Source: Bureau of Labor Statistics, U.S. Department of Labor, Occupational Outlook Handbook, 2016-17 Edition, Interpreters and Translators



## Facilities

FCC's Sign Language Interpreter Preparatory Program conducts all classes at our campus at 7932 Oppossumtown Pike Frederick, Maryland, 21702.

Classes will utilize lecture classrooms and computer labs for skill practice and assessment.

## IPP Faculty

The faculty is comprised of industry professionals who are actively working in their respective areas of expertise, and bring years of successful experience to the classroom.

## Financial Aid

Financial aid and scholarships are available for those who qualify. For more information about the types of financing available, please contact the Financial Aid Office at 301-846-2480.

## Application and Registration

Students may apply in-person or online at [frederick.edu](http://frederick.edu). New students are highly encouraged to meet with an advisor or program manager prior to enrolling in culinary classes.

The IPP also requires an additional application to the program. The application can be found online at [frederick.edu/IPP](http://frederick.edu/IPP). Interested students must also complete the ASL Proficiency Interview (ASLPI) and obtain a 2.0 or higher in order to be accepted into the program.

*Note: All new incoming freshman students are required to take assessment test for reading, writing and mathematics. Tests are administered in the testing center on campus. For more information contact the testing center at 301.846.2522.*

---

For more information about our graduation rates, the median debt of students who completed the program, and other important information, please visit our website at [frederick.edu/gainfulemployment](http://frederick.edu/gainfulemployment).

Frederick Community College prohibits discrimination against any person on the basis of age, ancestry, citizenship status, color, creed, ethnicity, gender identity and expression, genetic information, marital status, mental or physical disability, national origin, race, religious affiliation, sex, sexual orientation, or veteran status in its activities, admissions, educational programs, and employment. Frederick Community College makes every effort to accommodate individuals with disabilities for College-sponsored events and programs. If you have accommodation needs or questions, please call 301.846.2408. To request a sign language interpreter, please visit <http://fcc-interpreting.genbook.com>. If you have interpreting related questions, please email [Interpreting@frederick.edu](mailto:Interpreting@frederick.edu). Sign language interpreters will not be automatically provided for College-sponsored events without a request for services. To guarantee accommodations, requests must be made at least five workdays in advance of a scheduled event. If your request pertains to accessible transportation for a College-sponsored trip, please submit your request at least 21 calendar days in advance. Requests made less than 21 calendar days in advance may not be able to be guaranteed.

**For more information on the Interpreter Preparation Program:**

**Leslie Puzio • 301.624.2783 • [lpuzio@frederick.edu](mailto:lpuzio@frederick.edu)**

Course	Credits
<b>English</b>	
EN 101 English Composition.....	3
<b>Mathematics</b>	
Mathematics Elective (GenEd course list) (recommend MA 206).....	3
<b>Social &amp; Behavioral Sciences</b>	
Social Science Elective (GenEd course list) (recommend PS 101, SO 101, or HS 102).....	3
<b>Arts &amp; Humanities</b>	
ASLS 203 American Sign Language IV (if ASLS 203 is not needed, recommend CMSP 105).....	3
<b>Biological &amp; Physical Sciences</b>	
Biological & Physical Sciences Elective (GenEd course list, recommend BI 107).....	3
<b>General Education Elective</b>	
ASLS 106 Introduction to Deaf Community & History.....	3
(GenEd course list) (recommend CMSP 103, SO 102, or SO 212).....	3
<b>PE/Health Requirement</b> .....	1
<b>Departmental Requirements</b>	
ASLS 211 ASL Linguistics.....	3
ITR 104 Introduction to Interpreting.....	3
ITR 110 Interactive Discourse Analysis.....	3
ITR 112 Foundations of Interpreting.....	3
ITR 114 Consecutive Interpreting.....	3
ITR 212 ASL to English I.....	3
ITR 214 English to ASL I.....	3
ITR 216 Transliterating I.....	3
ITR 222 ASL to English II.....	3
ITR 224 English to ASL II.....	3
ITR 226 Transliterating II.....	3
ITR 230 Internship Seminar & Interpreting Environment.....	2
INTR 103 Internship.....	3

60

Course	Credits
<b>Departmental Requirements</b>	
ASLS 106 Introduction to Deaf Community & History.....	3
ASLS 211 ASL Linguistics.....	3
ITR 104 Introduction to Interpreting.....	3
ITR 110 Interactive Discourse Analysis.....	3
ITR 112 Foundations of Interpreting.....	3
ITR 114 Consecutive Interpreting.....	3
ITR 212 ASL to English I.....	3
ITR 214 English to ASL I.....	3
ITR 216 Transliterating I.....	3
ITR 222 ASL to English II.....	3
ITR 224 English to ASL II.....	3
ITR 226 Transliterating II.....	3
ITR 230 Internship Seminar & Interpreting Environment.....	2
INTR 103 Internship.....	3

41