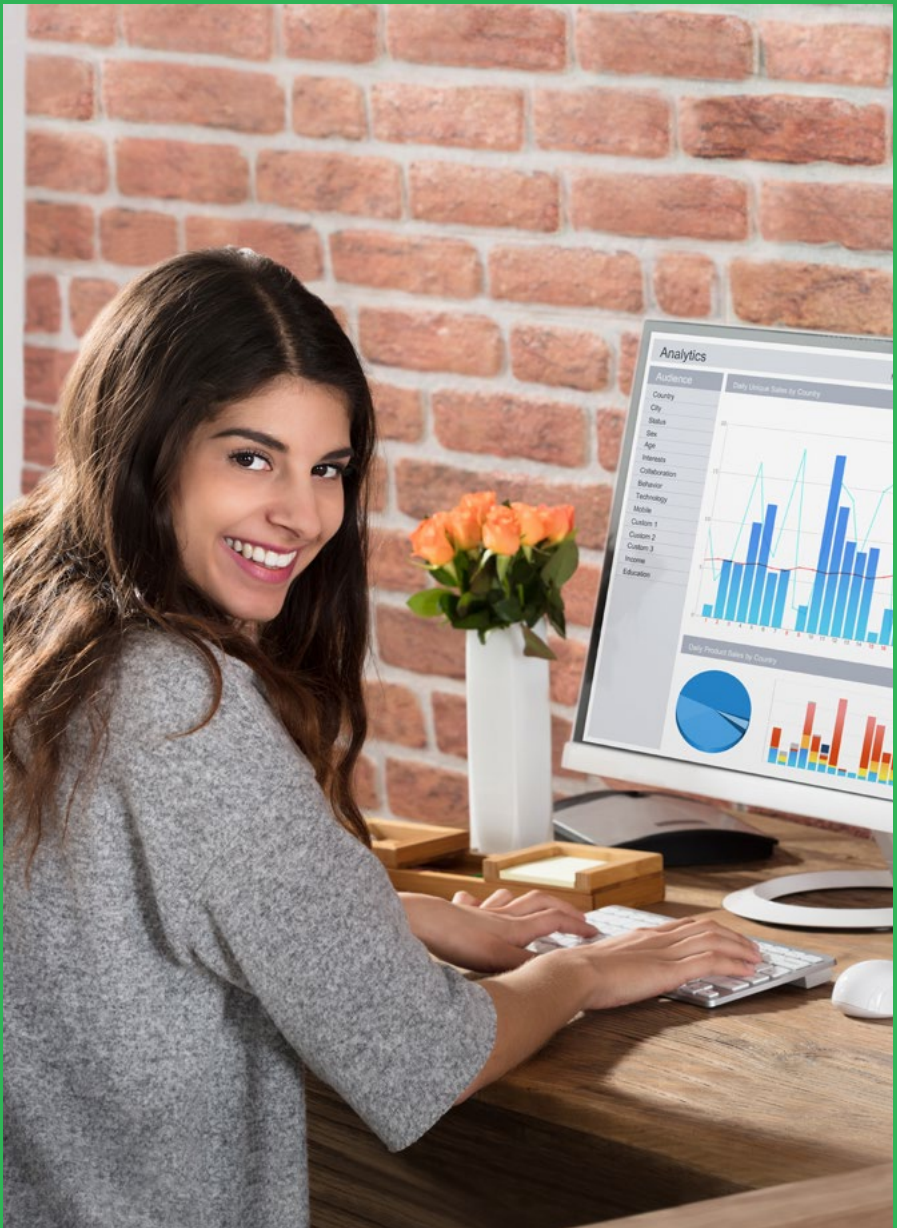


DATA SCIENCE



Program Contact:

James Hatch • 301.624.2769 • jhatch@frederick.edu

Data Science

The Data Science Area of Concentration within the A.A.S. in STEM Technology program prepares students for a career as a data scientist, data engineer, data architect, data administrator, data analyst, or business analyst in data-intensive fields including e-commerce, banking, healthcare, business and finance, social networking, science, telecommunications, and national security.

Data Science Area of Concentration within the A.A.S. in STEM Technology

The Data Science Area of Concentration within the A.A.S. in STEM Technology program covers the techniques, technologies, and tools necessary to collect, clean, manipulate, extract, transform, load, model, analyze, visualize, and present data as business intelligence.

Students in this program are prepared for careers in a variety of fields where data can be used to identify trends and provide insight to help companies make smarter business decisions. The program covers techniques from related fields including math and computer science to help students analyze and understand sets of data.

At the completion of the program, students will be able to:

- Extract valuable and useful information out of data.
- Present information using vitalization technologies.
- Analyze data to help make business decisions.
- Clean, integrate, and transform data into intelligence.

View required course listings:
frederick.edu/data

Growth Potential

The median annual wage for mathematicians and statisticians was \$88,190 in 2018. Employment of mathematicians and statisticians is projected to grow 30 percent from 2018 to 2028.

(Source: Bureau of Labor Statistics, U.S. Department of Labor, Occupational Outlook Handbook)

Financial Assistance

Frederick Community College (FCC) provides a tuition payment plan for students who wish to spread payment over several months. Scholarship and loan assistance is available for eligible students. For complete scholarship information, contact Financial Aid at 301.846.2620.

Internship Program

Internships help students integrate what is taught in school with what is required in the workplace. Students take internships to develop knowledge and skills valued by employers. Students in certain programs are eligible to receive credit for internships.

Transfer Note

Students can transfer the equivalent of 60 credits to any four-year institution in Maryland. To find more information about how credits will transfer from FCC to a state four-year institution visit artsys.usmd.edu or contact Counseling & Advising at 301.846.2471. Students who plan to transfer should speak with an advisor or program manager from their chosen transfer institution before selecting elective courses.

DATA SCIENTISTS



TRANSLATE
DATA



ACTIONABLE
INSIGHTS



1 JOB

GLASSDOOR.COM

RAPID JOB GROWTH

“BY 2020, DATA SCIENCE JOBS WILL BE IN HIGH DEMAND, HOLDING MORE THAN 680,000 OPENINGS.” - FORBES.COM

For more information:

James Hatch • 301.624.2769 • jhatch@frederick.edu

Frederick Community College prohibits discrimination against any person on the basis of age, ancestry, citizenship status, color, creed, ethnicity, gender identity and expression, genetic information, marital status, mental or physical disability, national origin, race, religious affiliation, sex, sexual orientation, or veteran status in its activities, admissions, educational programs, and employment. Frederick Community College makes every effort to accommodate individuals with disabilities for College-sponsored events and programs. If you have accommodation needs or questions, please call 301.846.2408. To request a sign language interpreter, please visit <http://fcc-interpreting.genbook.com>. If you have interpreting related questions, please email Interpreting@frederick.edu. Sign language interpreters will not be automatically provided for College-sponsored events without a request for services. To guarantee accommodations, requests must be made at least five workdays in advance of a scheduled event. If your request pertains to accessible transportation for a College-sponsored trip, please submit your request at least 21 calendar days in advance. Requests made less than 21 calendar days in advance may not be able to be guaranteed. Gainful employment information is available at www.frederick.edu/GE.